

Illinois Department of Commerce & Economic Opportunity

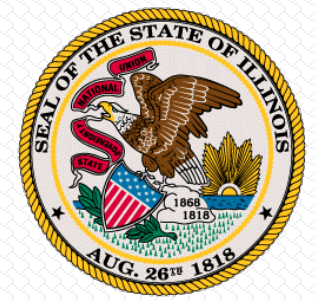
Office of Broadband

Connect Illinois Program

January 7, 2020



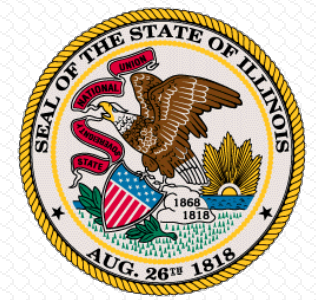
CONNECT ILLINOIS VISION



- To provide ubiquitous broadband connectivity that is *reliable and affordable* to all homes, businesses, and community anchor institutions throughout Illinois
- To promote digital literacy and adoption
- To drive economic development and expand opportunity and innovation in such areas as education, health care, and agriculture



BROADBAND STRATEGY ANCHORED BY SPEED GOALS

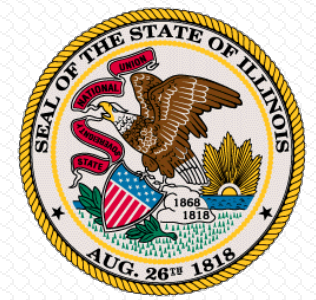


Short term basic access goal ... ensuring that all Illinois homes, businesses, and community anchor institutions can access broadband at basic service levels:

“All homes, businesses, and community anchors will have access to basic service of at least 25/3 Mbps.”



BROADBAND STRATEGY ANCHORED BY SPEED GOALS



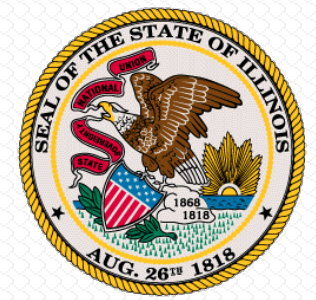
Longer term competitive access goal ... ensuring that all Illinois homes, businesses, and community anchor institutions have direct access to a provider with service levels necessary for advanced applications, heavy bandwidth use, or future need:

Defined in terms of:

- Ubiquitous service level (many) or percentage of premises connected (CA)
- Leadership position relative to other states and/or countries (MN)
- Comparable service levels in rural and urban areas (KS, NE)
- “Secure, reliable, competitive, and sustainable infrastructure” (ME)
- Economic development (ME) or affordability (MA)
- Removing regulatory barriers, promoting public-private partnerships (OR)



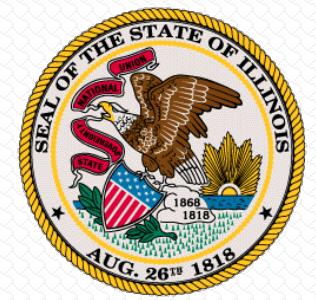
KEY CRITERIA FOR GRANT FUNDING



- **Competitive matching grants**
 - Score based upon merit
 - Require a certain non-state match
- **Technology neutral**
 - Open to a diverse range of providers and related technology
- **Scalable service**
 - Future upgrades to ensure long-term return on state investment
- **Applicant inclusive**
 - Encourage a wide variety of proposals, including but not limited to those from providers, cooperatives, municipalities, tribal entities, nonprofits, and P3s



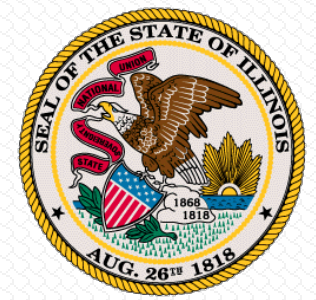
KEY CRITERIA FOR GRANT FUNDING, cont'd



- **Community driven approach**
 - Create incentives for direct engagement with local communities, various stakeholder groups, and/or inclusive community technology goals
- **Balanced challenge process**
 - Providers, communities, and other stakeholders to challenge the accuracy of broadband mapping, service levels, and grant eligibility
- **Additional scoring for alignment with Five-Year Economic Plan and related applications**
 - Invite applicants to identify how proposed projects align with related opportunities



KEY NEXT STEPS TO MOVE STRATEGY FORWARD



- RFP for state mapping pending
 - Where we are
 - Where we want to go
 - Progress over time
- Likely \$50 million in first round of investments
- First round likely to prioritize:
 - Unserved areas
 - Leverage federal dollars
 - Significant non-state match



CONNECT ILLINOIS DRAFT TIMELINE



Sum 2019 -
- Convene BAC
- WG Mtgs

Fall 2019 -
- Mapping RFP
- Strategic Plan

Win 2020 -
- Report on BAC
activities to GA
- Publish Maps
- Rd 1 NOFO
- Rd 1 Deadline

Spr 2020 -
- Challenge Process
- Award Grants

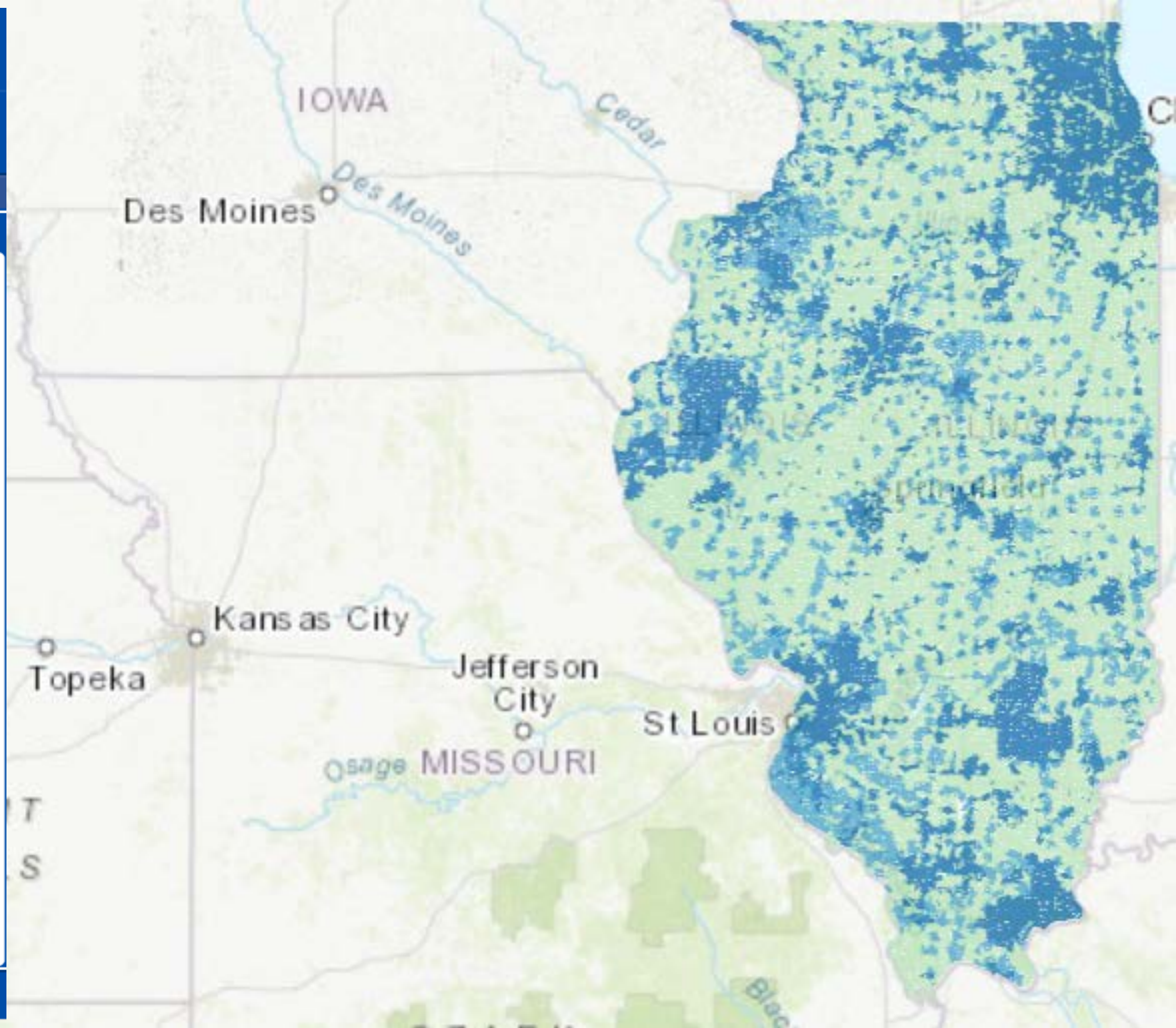


Layer List

Layers



- ▶ Community Anchors ...
- ▶ Educational Institutions ...
- ▶ Unserved - Less than 10 Mbps downstream and 1 Mbps upstream ...
- ▶ Minimum 10 Mbps downstream and 1 Mbps upstream and less than 25 Mbps downstream and 3 Mbps upstream ...
- ▶ Minimum 25 Mbps downstream and 3 Mbps upstream ...





QUESTIONS?

Matt Schmit | Deputy Director for Broadband
Department of Commerce & Economic Opportunity
Mobile: 773-497-3001 | matt.schmit@Illinois.gov